

oakheart



£375,000

Asking Price

Braintree Road, Cressing, Braintree

Set within the charming semi-rural village of Cressing, this exquisite three-bedroom home offers the perfect blend of tranquillity and convenience. Nestled in the heart of Essex countryside, Templar Fields is a thoughtfully designed development that combines the serenity of village life with easy access to the vibrant amenities of nearby towns. Whether you're seeking peaceful walks through picturesque landscapes or the excitement of shopping and dining in Braintree, this location caters to every lifestyle.

Templar Fields is an exclusive collection of just eight carefully crafted homes, ensuring a sense of community while maintaining personal privacy. Each property is surrounded by neatly landscaped gardens and spacious patios, ideal for relaxing outdoors or entertaining guests. Inside, the homes are

finished to an exceptional standard, featuring stylish kitchens and bathrooms equipped with contemporary fittings and convenient appliances.

Interior Features

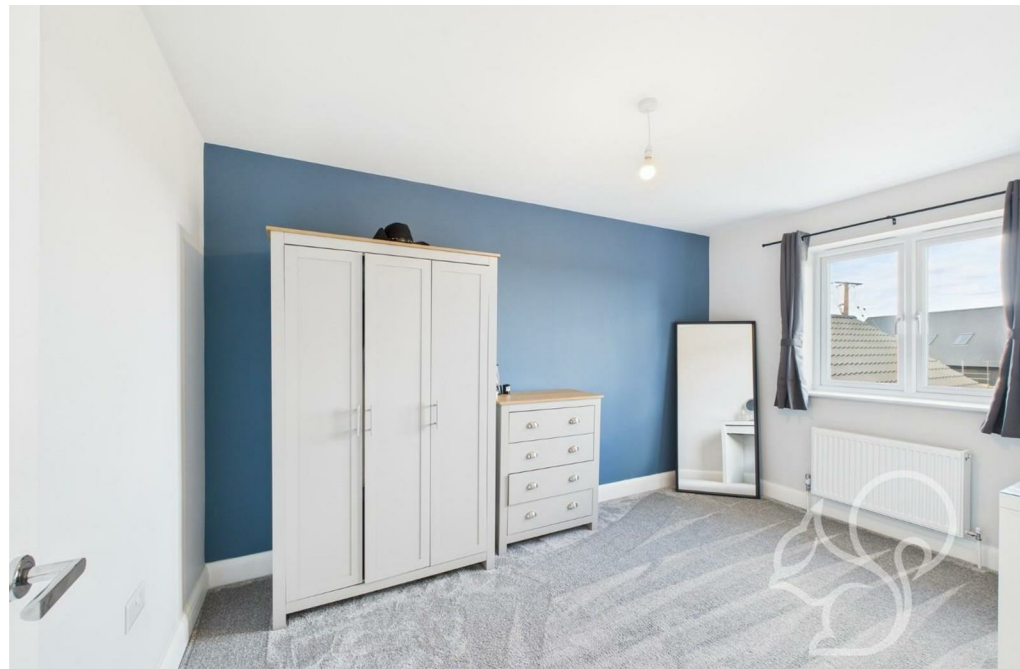
The kitchen is a true centerpiece, boasting fully fitted units that blend style and functionality. Integrated appliances and a splash-back to the hob add modern convenience and elegance to your cooking space. The bathrooms and en-suites are equally impressive, showcasing high-quality white sanitaryware complemented by chrome taps and fittings. Full-height tiling in shower cubicles and sleek glass enclosures create a luxurious spa-like experience. The master bedroom is a true retreat, featuring a large window that floods the space with natural light. This room also boasts an en-suite bathroom,

complete with a sleek glass-enclosed shower, chrome fittings, and contemporary sanitaryware, ensuring privacy and convenience.

The second and third double bedrooms are equally impressive in size, providing ample space for relaxation or productivity. Whether used as guest rooms, children's bedrooms, or even a home office, these rooms offer flexibility to suit your needs.











Approximate total area⁽¹⁾

214.65 m²

2310.47 ft²

GIRAFFE360

oakheart